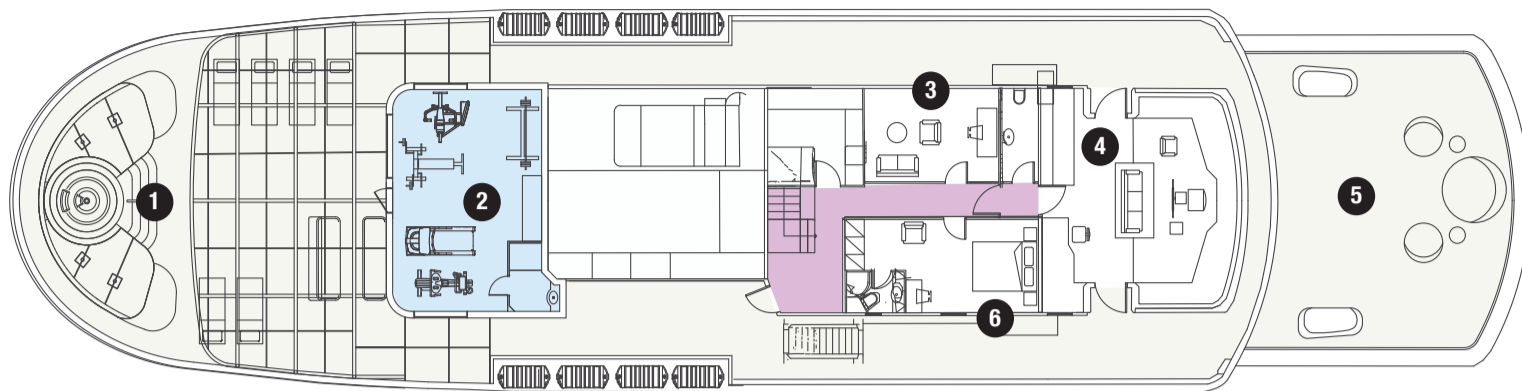




M/Y CHAKRA

*Detailed
Layout*

Bridge - Sun Deck



1 JACUZZI & CLUB AREA (110 m²)

2 GYM (32 m²)

3 CAPTAIN'S OFFICE

4 BRIDGE

5 YOGA & LOUNGE AREA (70 m²)

6 CAPTAIN'S CABIN



1 JACUZZI & CLUB AREA (110 m²)



2 GYM

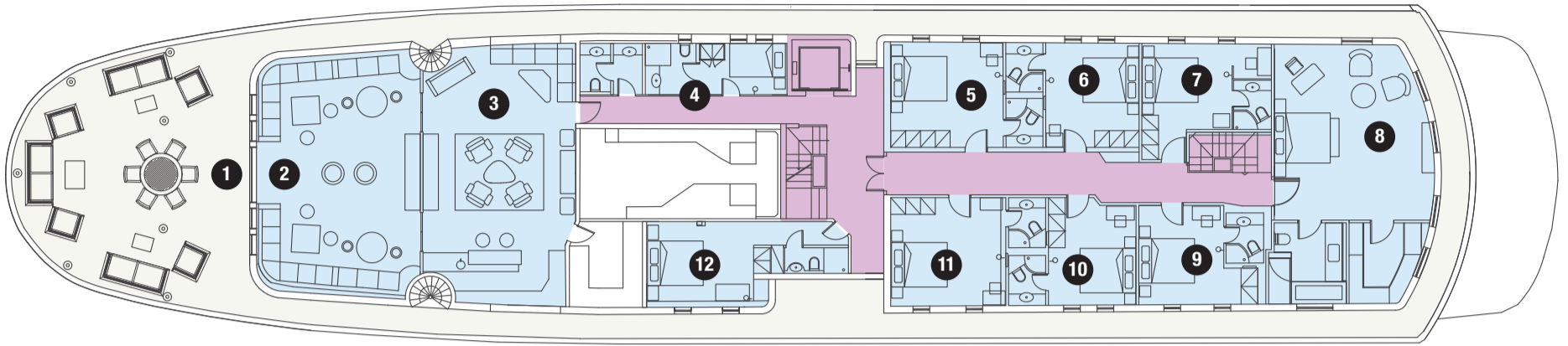


4 BRIDGE



5 YOGA & LOUNGE AREA (70 m²)

A Deck



1 EXTERNAL SEATING AREA (65 m²)

2 CLUB AREA (47 m²)

3 LOUNGE BAR (51 m²)

4 SINGLE CABIN A8 (9 m²)

5 DOUBLE CABIN A6 (19 m²)

6 DOUBLE CABIN A4 (14 m²)

7 DOUBLE CABIN A2 (16 m²)

8 VIP SUITE (50 m²)

9 DOUBLE CABIN A1 (16 m²)

10 DOUBLE CABIN A3 (14 m²)

11 DOUBLE CABIN A5 (19 m²)

12 DOUBLE CABIN A7 (18 m²)



1 EXTERNAL SEATING AREA



2 CLUB AREA



3 LOUNGE BAR



5 DOUBLE CABIN A6



8 VIP SUITE



8 VIP SUITE BATHROOM



11 DOUBLE CABIN A5

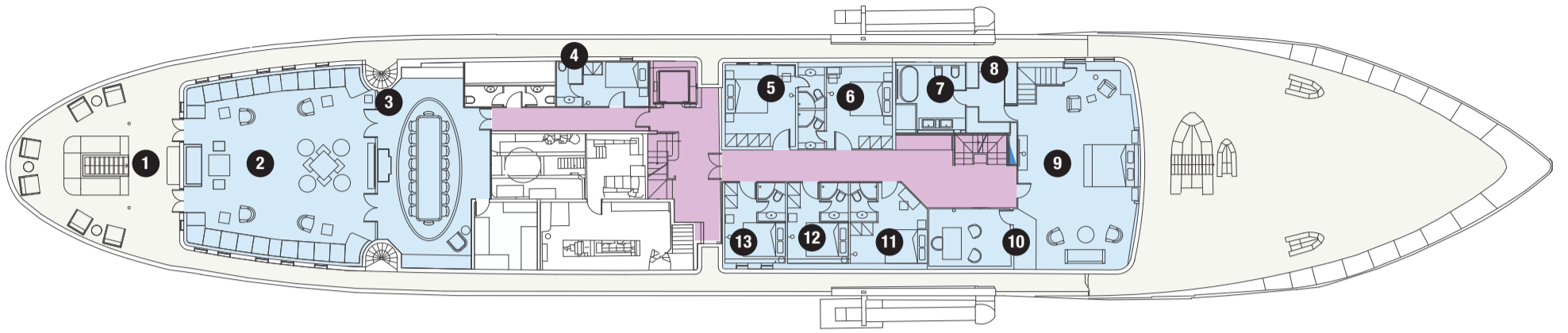


12 DOUBLE CABIN A7

BED SIZES / A DECK

Cabin 4 — 2.00 m x 1.00 m | Cabin 5, 6, 7, 9, 10, 11, 12 — 2.00 m x 1.60 m | Cabin 8 — 2.00 m x 2.00 m

B Deck



- | | | | |
|---|---|--|--|
| 1 OUTDOOR LOUNGE
AREA (45 m ²) | 3 DINING AREA (43 m ²) | 7 MASTER BATHROOM | 10 MASTER OFFICE |
| 2 MAIN SALON LOUNGE
AREA (74 m ²) | 4 SINGLE CABIN B6 (9 m ²) | 8 MASTER
WALK-IN CLOSET | 11 DOUBLE CABIN B1 (13 m ²) |
| | 5 DOUBLE CABIN B4 (16 m ²) | 9 MASTER CABIN (85 m ²) | 12 DOUBLE CABIN B3 (11 m ²) |
| | 6 DOUBLE CABIN B2 (15 m ²) | | 13 DOUBLE CABIN B5 (11 m ²) |



1 OUTDOOR LOUNGE AREA



2 MAIN SALON LOUNGE AREA



2 DINING AREA



3 DOUBLE CABIN B4



5 DOUBLE CABIN B2



8 MASTER BATHROOM



8 MASTER CABIN



11 MASTER OFFICE

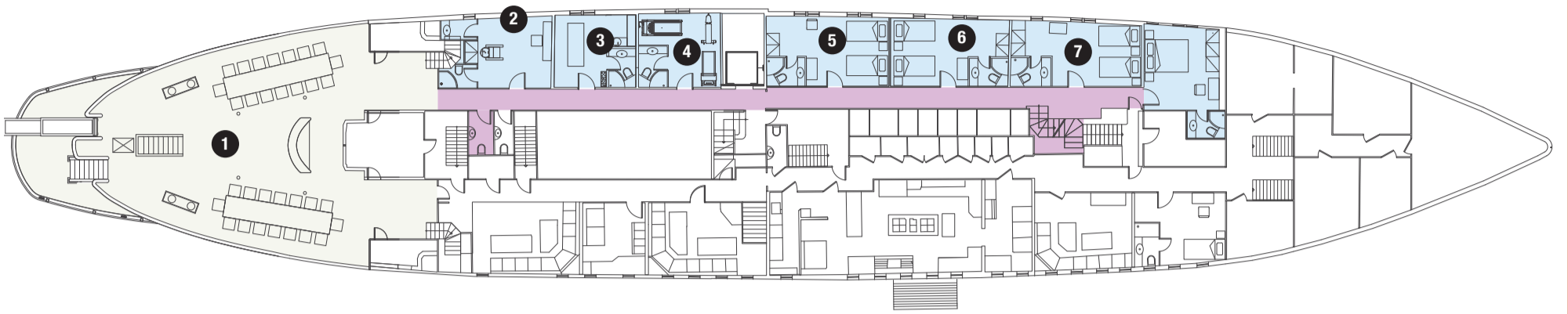


12 DOUBLE CABIN B3

BED SIZES / B DECK

Cabin 4 — 2.00 m x 1.00 m | Cabin 5, 6 — 2.00 m x 1.60 m | Cabin 9 — 2.00 m x 2.10 m | Cabin 11, 12, 13 — 2.00 m x 1.30 m

C Deck



- 1 DINING AREA** (130 m²)
- 2 BEAUTY PARLOR** (17 m²)
- 3 MASSAGE ROOM** (13 m²)
- 4 HOSPITAL** (13 m²)
- 5 TWIN CABIN C8** (18 m²)
- 6 TWIN CABIN C6** (17 m²)
- 7 TWIN CABIN C4** (18 m²)



1 EXTERNAL DINING AREA



2 BEAUTY PARLOR



3 MASSAGE ROOM



5 TWIN CABIN C8



7 TWIN CABIN C4

BED SIZES / C DECK

Cabin 5, 6, 7, —2.00 m x 1.00 m